



Integrated IT System for Zoos, Museums, Aquariums and Parks

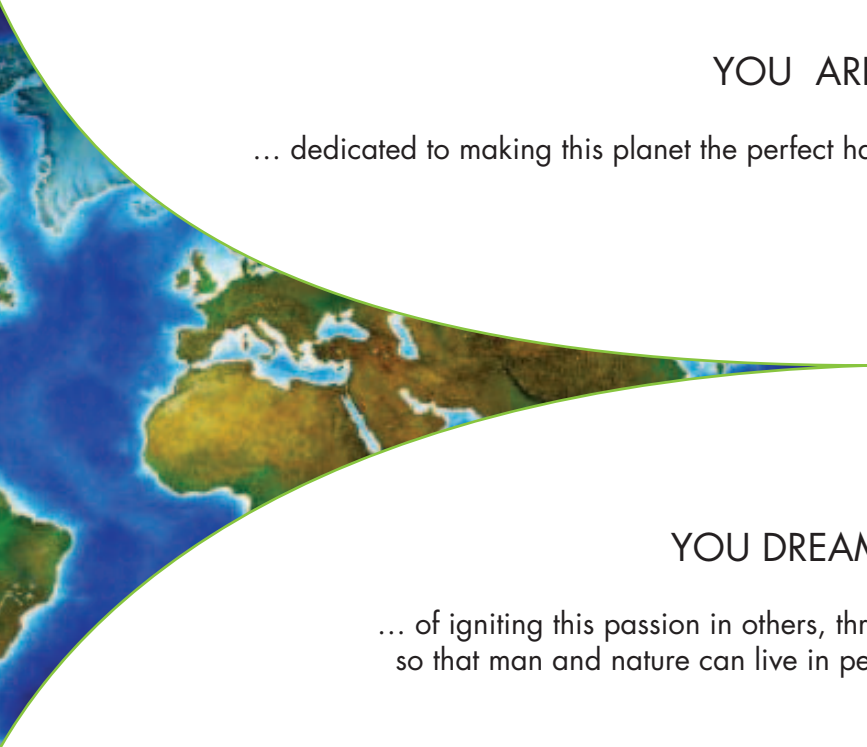


- It's New
  - It's Simple
  - It generates Revenue



## YOU ARE...

... dedicated to making this planet the perfect habitat for "all creatures great and small."



## YOU DREAM...

... of igniting this passion in others, through your institution, so that man and nature can live in perfect harmony.



## WE are here to meet these needs.

**We know** that Zoos, Museums, Aquariums and Parks are important pillars of our community imparting education and fun for neighborhood families. These institutions are constantly looking to improve their operations and run efficiently, so that the savings can be passed on to visitors to enhance their experience.

**We decided** to take the lead to create an integrated software for Zoos, Museums, Aquariums and Parks, because it is not there now, and because we believe that such a system will benefit these institutions and the visitors that come there.



## WE ARE

**KMIT Solutions.** We support the needs of customers in Zoos, Museums, Aquariums and Parks with systems that enhance revenues and integrate their key functions. We understand their world and provide customized solutions that work well for them.

Our goal is to empower you so that you can focus efficiently on your business and your visitors, and not be distracted with activities that drain your time and resources. Our solutions are easy to implement and we provide full scale implementation at your site, followed by 24/7 support of your needs.

KMIT Solutions is based out of Twinsburg, Ohio, and is a one stop shop of skills that can guarantee full satisfaction. We have a dedicated team of IT professionals that are competent and trained in the latest technologies and programming practices and platforms. Our highly proficient design and technical teams are available for your maintenance and support needs. Our sales and account executives are always available to help you with your system needs and are trained in knowing your business and understanding your industry.

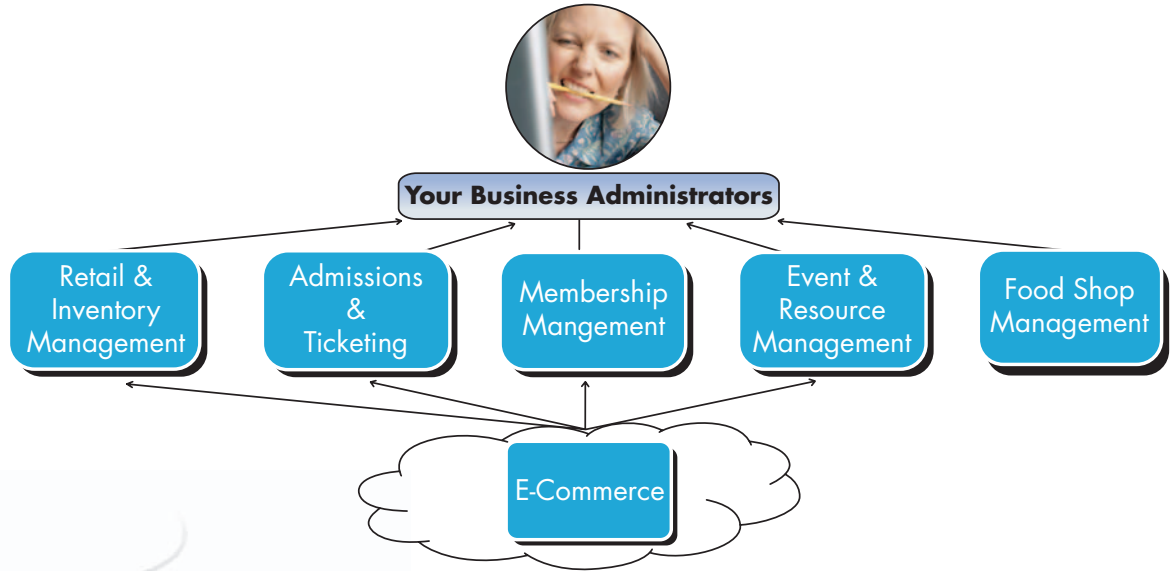
KMIT represents an independent entity in our field of expertise. Our parent company, K&M International Inc. is a global leader in the Zoos, Museums, Aquariums and Parks segment and one of the top players in the toys and gift segment. Its world wide distribution network now spans over 900 zoos, and its 7 global offices in Canada, Denmark, UK, Germany, Australia, Italy and Dubai make its reach truly intercontinental.

This is who we are... and we invite you to profit from our cutting edge expertise and comprehensive experience that have shaped our latest product with our Integrated IT System for Zoos, Museums, Aquariums and Parks.



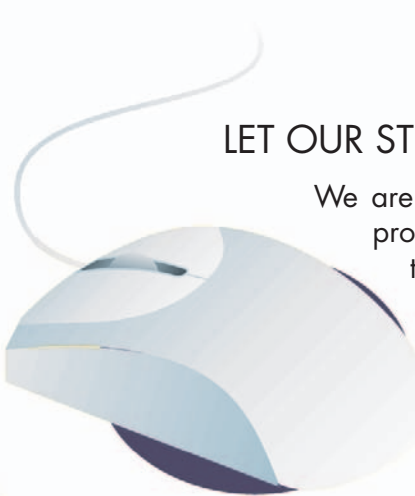


### Your Current Environment – Disconnected Systems



### LET OUR STRENGTHS WORK FOR YOU

We are on the fast track of growth, driven by a highly motivated team of professionals who are equipped with a complete suite of skills, and it is this competence that has helped us to custom-design an Integrated IT System for Zoos, Museums, Aquariums and Parks.

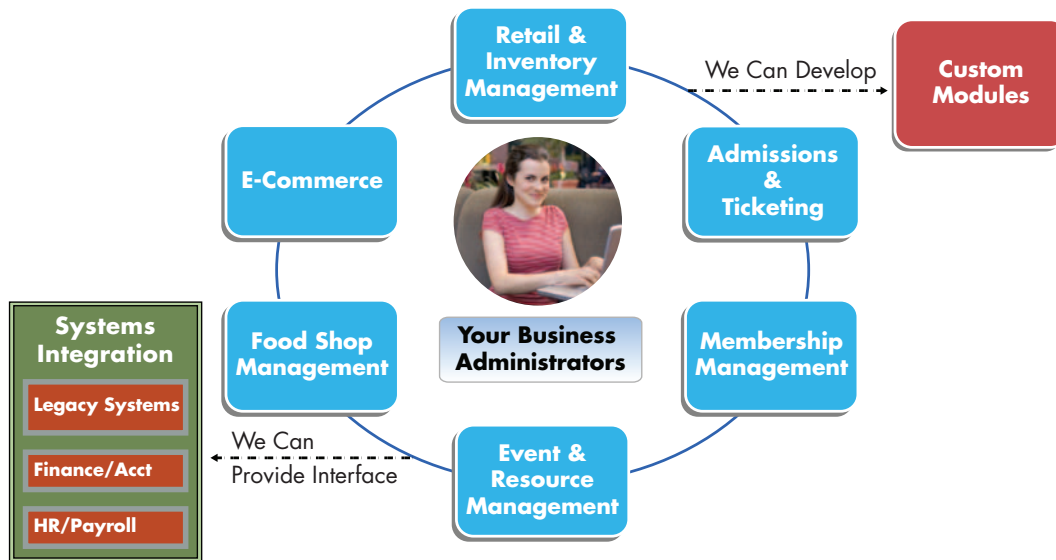


Currently, Zoos, Museums, Aquariums and Parks do not have an integrated IT system that automates their key processes. Further, market research has identified some un-met needs at Zoos, Museums, Aquariums and Parks, covering the functional areas of retail gift shops, admissions, ticketing, membership, event management and food shop management. Our newly designed and developed IT system, which has been developed based on user inputs, fulfills these un-met needs and also automates and seamlessly integrates the key functions. The result is that executives and managers can make insightful decisions on their visitors and increase revenues and productivity.





### Our Solution – An Integrated System



## WHERE AND HOW WE CAN HELP YOU

Our totally new Integrated IT system enables more streamlined operations in key areas. It links the key functional areas with just a click. For example, within seconds, an administrator can find out the total revenue generated for that day, week or month from admissions, retail gift shop and food shop. As the system is web based, this information can be accessed even from remote locations.

**Your advantage:** Improved efficiency and better insights in making crucial business decisions

The system is easy to use and designed to be simple. Even volunteers with no prior training can operate them. During installation our team will work with you to leverage and reuse your investment in existing hardware.

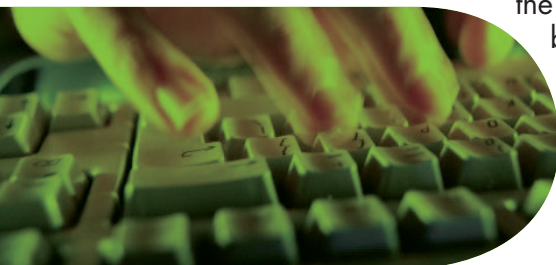
**Your advantage:** Installation costs are kept to the minimum

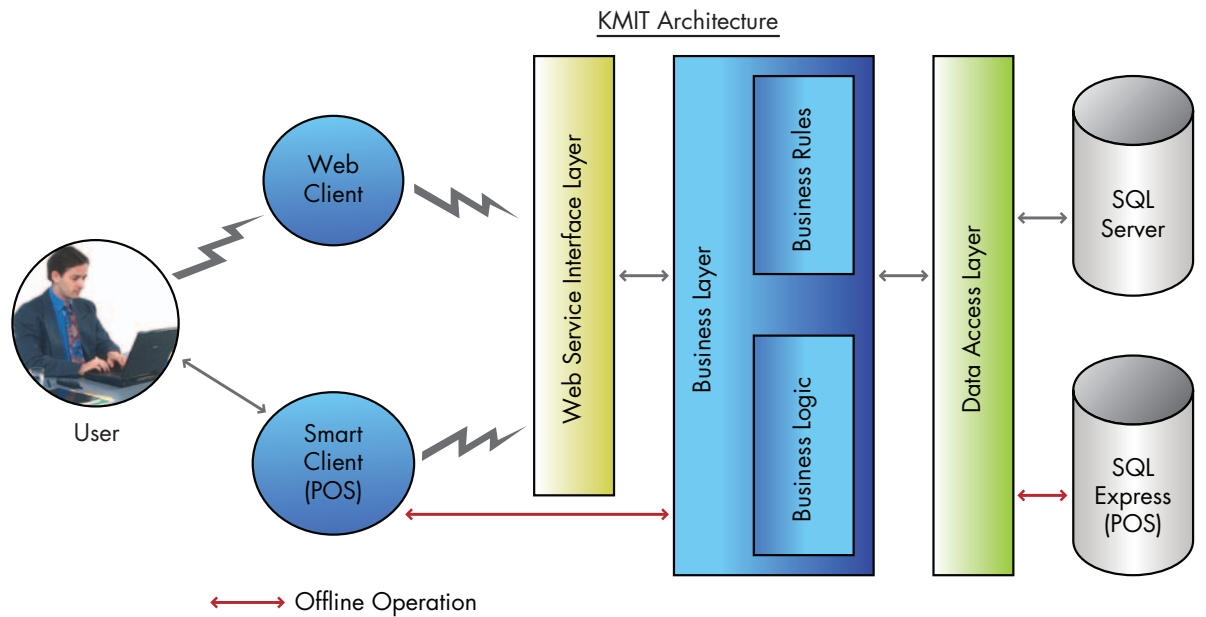
The system has a consistent look and feel across all modules and provides easy navigation that is common across all modules. It can be deployed as a Package or as a Service. If it is a package, the deployment will be fully at client site. If it is a service, it will be hosted by us.

**Your advantage:** Lower costs of ownership

Since this is a total system, you have to deal with only one vendor and not separate vendors for the different systems. You pick and pay only for the functionalities that you are most interested in from those that are offered.

**Your advantage:** You do not pay for any unwanted modules





## SERVICE-ORIENTED DESIGN

**Web client:** Web based application that the user can access through a web browser like Internet Explorer. Eliminates need to install any software on the client machine.

**Smart Client:** Windows based application, designed to interact seamlessly with multiple hardware.

**Web Service:** Web based Service that provides connection between the Business Logic and Client. Since it is a web based service at this layer, functionality can be extended directly for B2B operations (e.g., service contracts with vendors can eliminate user having to create items in the system, because vendors can upload items directly to the system).

**Business Logic Layer:** Directs the resource access call to data access layer and also incorporates the business rules associated with Business Rule engine.

**Data Access Layer:** Stores repositories to access the Database.

**SQL Server:** Server database for all operations and POS online operation.

**SQL Express:** POS database used to store the POS transactions offline and batch processed with the server.

# OUR INTEGRATED IT SOLUTION

## THE FIVE BENEFITS YOU ENJOY

The Integrated software and architecture offer the following technical benefits:

1. Easy development and addition of custom modules
2. Integrated e-commerce: cross sell items from different modules
3. Single sign on for authorized users to all modules
4. Globalization and Localization (multi currency and multi language)
5. Secure access and easy administration



## THE KMIT ADVANTAGE

- Customized Design
- Simplicity of Execution
- More Convenience
- Affordable Cost
- 24/7 Support

*Seamless Operations. Better Productivity. Greater Revenue. This is what you want.  
And this is what our new System offers you. To benefit from our experience and expertise, just contact*



Hari Kumar  
General Manager, KMIT Business Development  
1955 Midway Drive, Twinsburg, Ohio 44087, U.S.A.  
Email: [hkumar@kmitsolutions.com](mailto:hkumar@kmitsolutions.com)  
330-425-2550 ext 288 (Business)  
216-577-6166 (Cell)